

Back Pain Risk Scale

What are your chances of having back pain?

Take this quiz to find out.

1. How old are you?

- Under 30 - add 0
- 30 to 39 - add 1
- 40 to 65 - add 2
- Over 65 - add 3

2. Do you smoke?

- Yes - add 1
- No - add 0

3. Are you overweight?

- 0-5 lbs. overweight - add 1
- 6-10 lbs. overweight - add 2
- 11-15 lbs. overweight - add 3
- 16-20 lbs. overweight - add 4
- more than 20 lbs. overweight - add 5

4. How often do you exercise?

- 0 times per week - add 3
- 1 time per week - add 2
- 2 times per week - add 1
- 3 times per week - add 0
- 4-7 times per week - deduct 1

5. How often do you lift heavy objects?

- 0 times per month - add 0
- 1-2 times per month - add 1
- 3-4 times per month - add 2
- 5-6 times per month - add 3
- 7-8 times per month - add 4
- more than 8 times per month - add 5

6. Have you already experienced back pain?

- Yes - add 3
- No - add 0

TOTAL _____

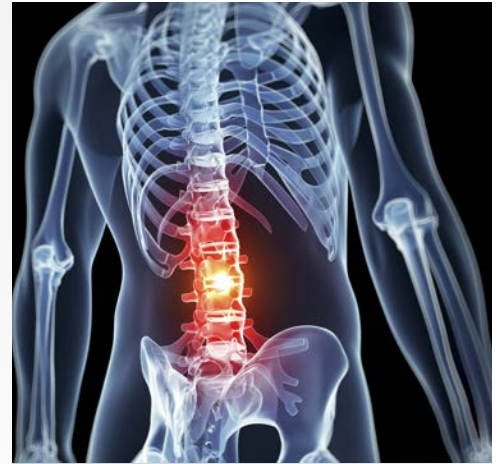
If your score is over 5 call LOPT for a free back screening.

Risk Scale

- 0** Congratulations! You are doing what you can to prevent back pain.
- 1-4** Low risk. You are doing many things right to prevent back pain.
- 5-8** Potential risk. You should change some habits.
- 9-12** Moderate risk. See a doctor to learn more about prevention.
- 13-16** Significant risk. You need to change habits NOW.
- 17-20** Serious risk! Back pain is likely.



Lincoln Orthopedic
Physical Therapy



- Excess weight increases your chance of developing back pain.
- Regular exercise can help prevent back pain.
- Lifting heavy objects can contribute to strain on the back; be sure you are using proper lifting techniques.
- Back pain affects 80% of people over the age of 30 at some point in their lives.

For Sports. For Work. For Life.

North Office

27th & Superior
4920 N. 26th Street
Lincoln, NE 68521
402-434-5361 • Fax 402-434-5365
Darren Ferguson, MPT, ATC, SCS
Ben DeWaard, MSPT
Brent Bednar, MPT, OCS

Northeast Office

84th & Holdrege
1651 N. 86th Street, Suite 100
Lincoln, NE 68505
402-484-7117 • Fax 402-484-7118
Roger Sand, PT
Tom Kruse, MPT, MTC
John Linn, MPT, ATC, OCS

South Office

Williamsburg Village
6120 Village Drive
Lincoln, NE 68516
402-420-2626 • Fax 402-420-6502
Jake Denell, PT, OCS, CWCE, CEEAA
Stephen Benson, DPT, OCS, MTC
Bruce Bednar, OTR/L, CHT, CWCE
Sherril Kilpatrick, PT

Beatrice Office

1200 N 6th St #B
Beatrice, NE 68310
402-228-1222 • Fax 402-806-4115
Zack Zade, DPT, CSCS

www.loptonline.com